



2025 ROLEX FASTNET RACE SAILING INSTRUCTIONS

ORGANISED BY THE ROYAL OCEAN RACING CLUB

IN ASSOCIATION WITH THE ASSOCIATION ARRIVÉE FASTNET CHERBOURG - CITY OF CHERBOURG-EN-COTENTIN, THE COMMUNAUTÉ D'AGGLOMÉRATION DU COTENTIN, THE CONSEIL DÉPARTEMENTAL DE LA MANCHE AND NORMANDY REGION

SATURDAY 26TH JULY 2025

FIRST WARNING SIGNAL 11.10

HW PORTSMOUTH 14.09 4.8M

CONTACT DETAILS

	Race Committee	Coastguard	Race Office Address
<u>Start</u>	<p>Callsign "Ocean One"</p> <p><u>VHF Channels:</u></p> <p>Ch.72 - Broadcasts by Race Committee</p> <p>Ch.77 - Calling Channel for Competitors (see also SI 11.4)</p> <p>Mobile/WhatsApp/SMS: +447825 007 035</p> <p>Tel: +441983 295 144</p> <p>Email: racing@rorc.org</p>	<p>"Solent Coastguard"</p> <p>VHF Channel 16</p> <p>MMSI 002320012</p> <p>+44 2392 552 100</p> <p>(for emergencies)</p>	<p>RORC Cowes Clubhouse</p> <p>The Parade</p> <p>Cowes, Isle of Wight</p> <p>PO31 7QU</p> <p>Tel:+44(0)1983 295144</p>
<u>Finish</u>	<p>Callsign "Ocean One"</p> <p><u>VHF Channels:</u></p> <p>Ch.72 - Broadcasts by Race Committee and</p> <p>Calling Channel for Competitors (see also SI 11.5)</p> <p>Mobile/WhatsApp/SMS: +447825 007 035</p> <p>Tel: +44 1983 295 144</p> <p>Email: racing@rorc.org</p>	<p>"MRCC Jobourg"</p> <p>VHF Channel 16</p> <p>+33 23352 1616</p> <p>Email: jobourg@mrcc.eu</p> <p>(for emergencies)</p>	<p>Rolex Fastnet Race HQ</p> <p>Plage Verte</p> <p>Port Chantereyne</p> <p>50100 Cherbourg-en-Cotentin, France</p>

BOATS RETIRING FROM THE RACE SHALL IMMEDIATELY NOTIFY THE RACE COMMITTEE.

The attention of every competitor is drawn to special regulation 1.02 and to the importance of having suitable and adequate personal insurance.

The responsibility for a boat's decision to participate in a race or to continue racing is hers alone.
(RRS Fundamental Rule 3)

The notation '[DP]' in a rule in these Sailing Instructions means that the penalty for a breach of that rule may, at the discretion of the International Jury, be less than disqualification.

The notation '[NP]' in a rule of the Sailing Instructions means that a boat may not protest another boat for breaking that rule. This changes RRS 60.1.

The notation '[SP]' in a rule in these Sailing Instructions means that for a breach of this rule a standard penalty may be applied by the Race Committee without a hearing. This changes RRS 60.1, 63.2(a) and Appendix A.

1 RULES

- 1.1 The regatta will be governed by the rules as defined in The Racing Rules of Sailing (RRS), including the following RYA Prescriptions to the Racing Rules of Sailing – 4, 6, 65.1, 86.3 and 88.2.
- 1.2 [DP] World Sailing's Offshore Special Regulations Category 2 with RORC Prescriptions
- 1.3 [DP] IRC Rules A, B and C, MOCRA Rules, IMOCA 60 Rules, Class40 Rules and other classes as appropriate.
- 1.4 World Sailing Test Rule DR21-01 applies. The RRS definition of "Start" is changed as follows:
Start: A boat starts when her hull having been entirely on the prestart side of the starting line, and having complied with rule 30.1 if it applies, any part of her hull crosses the starting line from the pre-start side to the course side either
(a) at or after her starting signal, or
(b) during the last 60 seconds before her starting signal.
When a boat starts in accordance with item (b) of the definition Start, she shall not return to the pre-start side of the line, and the starting penalty shall be 120 minutes added to her elapsed time. RRS 29.1 does not apply. This changes RRS A5.
- 1.5 [SP] [DP] Appendix RV of the Racing Rules of Sailing apply in reduced visibility, and in any case between 20:45 and 05:30 daily.
- 1.6 [SP] [DP] RRS Appendix TS (Traffic Separation Schemes 2025-2028), Section B applies to all Traffic Separation Schemes. The penalty for infringing RRS Appendix TS Section B shall be a 3% time penalty added to the boat's elapsed time.
- 1.7 If there is a conflict between languages the English text will take precedence.
- 1.8 If there is a conflict between the Notice of Race and these Sailing Instructions, these Sailing Instructions will take precedence over the Notice of Race. This changes RRS 63.5(c)(2).

2 EQUIPMENT INSPECTIONS AND MEASUREMENT CHECKS [DP]

- 2.1 At the discretion of the Organising Authority, a boat or equipment may be inspected at any time for compliance with the class rules, notice of race and sailing instructions.

3 USE OF DRONES [DP]

- 3.1 Use of drones or other small, unmanned aircraft is strictly forbidden by all competitors, including any supporting vessels, between 11.00 hrs. (BST) and 16.00 hrs. (BST) on Saturday 26th July 2025 within the boundaries formed by the following lines of longitude - 001° 04'.00W to the east and 002° 00'.00W to the west. Notwithstanding these requirements, all competitors must adhere to the regulations relating to flying of drones or other small unmanned aircraft outlined by the CAA regulations available at: <https://www.legislation.gov.uk/uksi/2024/990/contents/made>

4 NOTICES TO COMPETITORS

- 4.1 All notices to competitors will be posted on the Official Notice Board at event website at [Rolex Fastnet Race](#)
- 4.2 In addition to the Official Notice Board and VHF, a "WhatsApp" group with voluntary sign-up will be used to assist competitors to stay informed of Race Committee intentions, notices, results, protest details and other information during the event. Sign-up details will be available to all competitors from the race office.
- 4.3 Failure in transmitting or receiving VHF communications or messages, errors, omissions, or delays will not be grounds for a request for redress. This changes RRS 61.4(b)(1).

5 NOTICE TO MARINERS [DP]

- 5.1 Competitors are reminded of their responsibility to take account of Notice to Mariners and should be particularly aware of: Southampton Precautionary Area (Thorn Channel) Competitors are reminded to maintain a constant watch for shipping movements, particularly in the Port of Southampton Precautionary Area (Thorn Channel). Your attention is drawn to ABP Notice to Mariners No 06 2025 which covers the movement of shipping and the likely vessel tracks. See: [Notices to Mariners - Southampton VTS - ABP Southampton](#) The Race Committee or Protest Committee may protest a boat for breach of the International Regulations for Preventing Collisions at Sea (IRPCAS) or the above regulations based on a report from any source. This adds to RRS 60.4(c).

6 EVENT BACKSTAY FLAGS AND BATTLE FLAGS [DP]

- 6.1 All competitors will be provided with an official Rolex backstay flag that shall be flown at least 1.5m above the deck while racing.
- 6.2 Race sponsor's battle flags will be provided after the race and shall be flown from the forestay while berthed in the Race Village.

7 AIS [NP][DP]

- 7.1 All boats shall have their AIS transponder switched on, transmitting (at least every minute) and receiving from 09:00 hrs. on Saturday 26th July and throughout the race.
- 7.2 A boat's AIS must transmit; the boat's MMSI number and current racing name.
- 7.3 Nothing shall be done to inhibit AIS transmissions.
- 7.4 Boats unable to meet these requirements shall submit comprehensive details of the reason on their Declaration Form and may be subject to protest.

8 YB TRACKERS [NP][DP]

- 8.1 It is mandatory for all boats to carry a YB Tracker unit for the race. The tracking can be viewed on the Rolex Fastnet Race website: [Rolex Fastnet Race](#) Boats are required to have their trackers switched on and able to transmit (at least every minute) and receiving from 09:00hrs. on Saturday 26th July 2025 and throughout the race. YB Trackers must remain connected, until the boat finishes.
- 8.2 Nothing shall be done to inhibit YB Tracker transmissions.
- 8.3 YB tracker/player data shall not be used by a protesting yacht.

9 CLASS FLAGS [DP] [NP]

Class	TCC Range	Class Flag
IRC Super Zero	1.550 and greater	Pennant 9
IRC Zero	1.280 – 1.549	Pennant 0
Admirals Cup 1 & Admirals Cup 2	1.280 – 1.464 1.100 – 1.276	AC 1 or AC 2 flags
IRC 1	1.090 – 1.279	Pennant 1
IRC 2	1.046 – 1.089	Pennant 2
IRC 3	1.010 – 1.045	Pennant 3
IRC 4	0.850 – 1.009	Pennant 4
Class40		Class Insignia
IMOCA 60		Class Insignia
Multihull		Pennant 8

10 MANDATORY REPORTING BEFORE RACE [NP][SP]

- 10.1 Before leaving the dock, boats shall have an accurate crew list lodged in the online entry system.
- 10.2 RORC will be using WhatsApp and the Competitor App to confirm final crew numbers on race day and will send the registered boat communication number a notification prior to the race. This will come from our system's WhatsApp number and not the usual RORC WhatsApp account.
Once the Pre-Race crew number declaration on WhatsApp has been received and no later than 12.00 hrs., boats shall reply with the numeric number of crew that are on board and wait for the reply which will confirm if you have the correct number registered on your SailRaceHQ account. Please note that the confirmation message may take up to two minutes. If you are not on WhatsApp, have any issues with the reply or do not receive the message by 11.00 hrs., you must text +447825 007035 between 11.00 hrs. and 12.00 hrs. with Boat name and Crew number.
- 10.3 In exceptional circumstances, approved by the Race Committee, when the persons on board do not match the crew list as declared on the online entry system, then the full names(s) of either the persons not on the crew list or those not on board the boat shall also be included in the message.
- 10.4 A boat shall not sail with a crew member whose Emergency Contact details have not been lodged on the online entry system before the start of the race.
- 10.5 Should any boat fail to correctly report crew numbers and/or fail to identify changes to the crew list, the Race Committee shall, without a hearing, apply a standard time penalty.

11 COMMUNICATIONS

- 11.1 In addition to the Official Notice Board and VHF, a "WhatsApp" group with voluntary sign-up will be used to assist competitors to stay informed of Race Committee intentions, notices, results, protest details and other information during the regatta. Sign-up details will be available to all competitors from the race office.
- 11.2 Failure in transmitting or receiving VHF communications or messages, errors, omissions, or delays will not be grounds for a request for redress. This changes RRS 61.4(b)(1).

At the Start:

- 11.3 **VHF Ch.72** - The Race Committee (Callsign "Ocean One") may broadcast information on VHF Ch.72 at the start. Boats are strongly recommended to **listen** to the Race Committee until clear of the Solent, then change or dual-watch VHF 16.
- 11.4 **VHF Ch.77** - A boat may, without infringing RRS41 (Outside Help), request and receive repetition of information broadcast by the Race Committee or enquire whether or not a broadcast has been made. **VHF Ch.77 is the designated calling channel when contacting the Race Committee "Ocean One".**

At the Finish:

- 11.5 **VHF Ch.72** - The Race Committee (Callsign "Ocean One") may broadcast information on VHF Ch.72 at the finish. See SI 21.3 for listening and response requirements when approaching the finish line.

At all Other Times:

- 11.6 **VHF Ch.16** - Boats are reminded of their legal obligation to keep a continuous watch on VHF Ch.16 throughout the race.
- 11.7 Inter-boat communication calls should when possible be on DSC or VHF Ch.16 as a calling Channel and VHF Ch.72 as a working Channel.
- 11.8 Boats with communications in addition to VHF should act as a link, taking other boats' reports on VHF and passing them to the Race Committee or Coastguard when requested or called upon to do so.
- 11.9 **Onboard Mobile** – Boats are reminded to monitor their nominated onboard mobile phone. This may be needed by the Race Committee in an emergency.
- 11.10 Boats that do not start or retire from the race must promptly inform the Race Committee (see page 1 for contact details). It is imperative that boats that are no longer racing can be excluded from any Search & Rescue operation. **Failure to comply with this rule may lead to exclusion from future RORC racing.**
- 11.11 Rule 41(c) is replaced by: A boat shall not receive help from any outside source, except (c) help in the form of information, which is available on a public domain, free or by paid subscription. This shall include navigational, weather, tide or current information from any source which is readily available to all boats whether or not by payment of a fee or subscription, but shall not include information gathered or the subject of interpretation by, or any advice received from, any direct human input not on board the boat and which is specific to the boat and her situation.
By way of an example and interpretation, any publicly offered Internet weather data, forecasts, or cloud routing service available to all competitors, whether on a subscription or free basis, is permitted. Permissible Internet-sourced weather data, forecasts, or cloud routing services accessed by a yacht while racing must be computer-generated and free from any direct human input from off the boat.

12 PRE-START WAITING AREA [NP]

- 12.1 Two pre-start waiting areas have been established and are detailed in Appendix A. Yachts are requested to wait in these areas until twenty minutes before their warning signal.

13 STARTING TIMES AND SIGNALS

- 13.1 The race will be started by using RRS 26, with the warning signal being made 10 minutes before the starting signal.

13.2 Proposed Starting Times

Class	Class Flag	Warning Signal	Preparatory Signal	1 Minute Signal	Start
Multihull	Pennant 8	1110	1116	1119	1120
IMOCA 60	Pennant 7	1120	1126	1129	1130
Class 40	Pennant 6	1130	1136	1139	1140
IRC Z/SZ	Pennant 0	1140	1146	1149	1150
Admirals Cup 1 and 2	AC 1&2	1150	1156	1159	1200
IRC 1	Pennant 1	1210	1216	1219	1220
IRC 2	Pennant 2	1230	1236	1239	1240
IRC 3	Pennant 3	1250	1256	1259	1300
IRC 4	Pennant 4	1310	1316	1319	1320

- 13.3 The Race Committee reserves the right to amend starting times and order of classes.

14 STARTING LINE

- 14.1 The starting line is formed by bringing the Royal Yacht Squadron's (RYS) Flagstaff (in approximate position 50° 46'.004N 001° 18'.055W) into line with the white line on the orange diamond on the Castle. (As an aid to competitors vertical light beams are installed at the RYS to identify the starting line transit. The intensity of the light beam increases as you approach the line, but the lights are momentarily obscured by the forward mast when you are on the line. The lights are navigational aids only and do not constitute the starting line. Any failure of this equipment shall be disregarded.)

Outer limit: (which is not on the starting line) Williams Shipping Buoy (50° 47'.20N, 001° 18'.55W). leave to starboard.

- Inner limit:** An Inflatable Rolex Buoy (which may not be on the starting line), up to 200m from the RYS Flagstaff; leave to port.
- 14.2 **The start will be to the West.**
- 14.3 A Committee Boat (probably 'Three Cs'), displaying a blue flag with a white Seahorse and Crown and white border, will be in the vicinity of Williams Shipping Buoy/ Rolex Buoy.

15 LATE AT THE START

- 15.1 If a boat has not previously come to the starting area at her preparatory signal and comes to the starting area under power (or being towed), they shall stop their engine (or drop their tow) and complete a Two-Turns penalty as specified in RRS 44.2 before starting.
- 15.2 No penalty will be imposed for an infringement of RRS 42 for complying with SI 15.1. This changes RRS 42.

16 AREAS THAT ARE OBSTRUCTIONS [SP]

- 16.1 Whilst racing, a boat shall not enter an area designated as an Obstruction in SI Appendix A.
- 16.2 Additionally, boats shall:

Not pass south of a line joining M Row Mooring Buoys (western end at approx. 50° 46'.100N, 001° 18'.870W and the eastern end at approx. 50° 46'.131N, 001° 18'.147W) – Snowden (39) – Cowes Corinthian (34) – Shrape beacon, unless transiting to or from the Medina River or using the South Identity Gate (Cowes Corinthian 34).

Not anchor or kedge in the area extending westwards from a line joining Egypt Point and Stansore Point to a line joining Inchmery House (Beaulieu Channel) and Thorness Bay, identified as a no-anchor zone on charts.

Not pass to the North of the beacon marking the obstruction of iron piles (Sowley Boom) to the East of Lymington, near Durns Point;

Not pass to the south of Yarmouth (Port) Fairway Buoy (FL Red 2s, 50° 42'.62N 001° 29'.95W).

17 THE COURSE

- 17.1 The course for all Classes is listed in Appendix B.

18 REPORTING [NP][DP]

- 18.1 In the event the Race Committee asks a boat to report (i.e. tracker failure), reporting should be done by Mobile/WhatsApp/SMS: +447825 007 035, email (racing@rorc.org) or any other means possible. Reports shall include:

Name of boat and Sail Number
Date/time (BST)/position
Course and Speed over the Ground
Names of any Boats nearby

19 USE OF ENGINE [NP][DP]

- 19.1 When a boat uses its engine for propulsion, e.g. to avoid collision or in an emergency, the facts shall be reported on her Declaration Form.
- 19.2 Temporary discontinuance of racing: If a boat makes fast in order to take shelter or in an emergency, the crew may temporarily leave the boat to handle her moorings. If she uses her engine for propulsion she shall, on rejoining the race, return to the spot where she began to use her engine, turn off her engine and continue to race from that spot. She shall report the circumstances on her Declaration Form. This changes RRS 45 and 48.2.
- 19.3 A boat that is secured in harbour may receive any assistance to effect repairs or take on any supplies or equipment. This changes RRS 41 and 48.1.

20 TIME LIMIT

- 20.1 There is no time limit for the race.

21 THE FINISH [NP][DP]

- 21.1 The finish line is between the flagpole on Fort de Chavagnac and the light station on Fort De L'Ouest, Cherbourg, at an approximate bearing of 069°M.
- 21.2 At night boats are required to shine a light onto their sail numbers to help with identification.
- 21.3 All boats shall monitor **VHF Ch.72** from approximately 5 miles out and **respond only** if requested by "Ocean One".
- 21.4 "Ocean One" may ask a boat to assist with identification when finishing, especially at night.

22 AFTER FINISHING [NP][DP]

- 22.1 After finishing, and when "Ocean One" is able to respond, competitors will be passed to the berthing team in Cherbourg for further instructions. The berthing team will be on **VHF Ch 77**.
- 22.2 Berthing will be in Cherbourg, at either Port Chantereyne Marina or the Bassin du Commerce Cherbourg. Boats with drafts deeper than 4.5m may be requested to use moorings in Port Chantereyne and will be able to utilise the provided tender service.
- 22.3 Competitors are required to follow all instructions given by "Chantereyne Marine" in respect of berthing. **Failure to comply with this rule may lead to exclusion from future RORC racing.**

- 22.4 IRC or MOCRA classes: The RORC will provide free berthing until Sunday 3rd August at 12.00 hrs. Berthing beyond 12.00 hrs. on Sunday 3rd August is subject to availability and boats are liable for any further berthing fees. For boats finishing after 12.00 hrs. on Sunday 3rd August RORC will provide free berthing for 24 hrs after arrival.
- 22.5 Unless prior arrangements have been agreed with the OA, as per NOR 10.3.1 all boats in classes apart from IRC and MOCRA, shall berth for 48hrs after finishing. The RORC will provide free berthing throughout this period. Should the class prizegiving be held within the 48hr berthing period, boats may leave after the conclusion of the prizegiving.

23 RACE FINISH DECLARATIONS [NP][SP]

- 23.1 **All boats are reminded to take their own finishing times (BST)** together with the names of the boats ahead and astern, if any. Finishing times shall be written on the online Declaration Form and submitted as soon as possible either online or using the competitor app.
- 23.2 When a boat retires from the race, she shall write the reasons on her Declaration.
- 23.3 When, after finishing the race, a boat cannot promptly declare, she shall without delay telephone the Race Committee to confirm that she has finished racing and give her time of finishing in BST.

24 PENALTIES

- 24.1 When a Scoring penalty does not apply, RRS 44.1 is changed so that the Two-Turns Penalty is replaced by the One-Turn Penalty.
- 24.2 When World Sailing Appendix RV rules apply, a scoring penalty applies: A boat takes a scoring penalty by displaying a yellow flag at the first reasonable opportunity after the incident. She shall include full details of the penalty on her declaration form. Her penalty will be a 3% time penalty added to her elapsed time for each penalty.
- 24.3 Standard Penalties [SP]:
- 24.3.1 For a breach of any area designated an Obstruction, i.e. Traffic Separation Schemes, the Race Committee shall, without a hearing, apply a standard time penalty of 5%. This changes RRS 63.1 and A5.
- 24.3.2 Unless the rule itself states a different penalty, for any breach of a rule marked [SP], the Race Committee shall, without a hearing, apply a standard time penalty of 5%. This changes RRS 63.1 and A5.
- 24.3.3 Should the Race Committee consider a standard penalty to be inappropriate, it may protest the boat.
- 24.4 When the International Jury decides that a boat that is party to a protest or redress hearing has broken a rule other than RRS Part 1 and 2 and that no serious damage or injury was caused and no significant advantage has been gained, it may apply a time penalty of up to 10%. Should the International Jury decide that the breach was minor and unintentional it may at its discretion apply a different penalty.

25 PROTESTS AND REQUESTS FOR REDRESS

- 25.1 An International Jury has been appointed. Decisions made by the International Jury will not be subject to appeal under RRS 70.5.
- 25.2 Boats intending to protest or request redress for an incident in the racing area should radio their intention to the Race Committee as soon as practical after finishing or retiring from the race concerned, naming any other boats involved, and await an acknowledgement. This adds to RRS 60.2(a)(1).
- 25.3 The protest time limit is 6 hours after the protesting boat finishes.
- 25.4 Hearing Request forms and Scoring Enquiries may be lodged online within the protest time limit, a link is available on the Official Notice Board within the online Protest Board. Hearing Requests may also be written on plain paper and submitted via email to racing@rorc.org or by another means to the Race Office.
- 25.5 Notices will be posted within 30 minutes of the protest time limit, or before, to inform competitors of hearings in which they are parties or named as witnesses. The location and time of hearings will be posted.
- 25.6 Notices of protests by the Race Committee, Technical Committee or International Jury will be posted to inform boats under RRS 60.2(d).

26 SCORING

- 26.1 The Scoring System defined in Notice of Race 15 will apply.

27 TROPHIES AND PRIZES

- 27.1 The Rolex Fastnet Race has many trophies of which full details do not appear in the Notice of Race. The award of some trophies can only be decided from information submitted before the start of the race. Boats wishing to be eligible for these trophies, listed below, must complete and return the Trophy Application Form posted on the event website to racing@rorc.org no later than 12.00 hrs. Saturday 19th July 2025.
- 27.2 IRC Division Trophies:

Duncan Munro-Kerr Memorial Trophy: Best boat with skipper aged between 18 and not more than 30 on 26th July 2025.
Service Boats – Inter-Regimental Cup: Best Service Boat on corrected time in IRC and Culdrose Trophy: Best Service Boat round the Fastnet Rock*.

*** Fastnet Rock Rounding Trophies:** To be eligible boats must have completed the race.

Dennis Doyle Memorial Salver: Skipper who has done the greatest number of Fastnet Races including the current one.

Coates Scholfield Trophy: The boat whose crew have sailed the furthest to compete in the race.

The Sparkman and Stephens Trophy: Best Sparkman and Stephens designed boat.

Maite de Arambalza Trophy: Best boat with a female skipper.

Corporate Boats - Bloodhound Cup: At least 50% of the crew is in full time employment with the same company. Two-Handed boats are not eligible for this trophy.

Team Challenge - Martin Illingworth Trophy Inter-Club: for a team of 3 boats nominated by an affiliated Club.

The winning team will be that in which all three boats, racing under IRC, finish, and whose aggregate Corrected Time is the least. A boat may feature in only one team in a race. No more than one team per Club. Open to any Club affiliated to a National Authority. RRS Appendix D – Team Racing Rules do not apply.

Sailing School – Roger Justice Trophy: Best sailing school boat overall.

27.3 **Fastnet Rock Challenge Trophy:** BCT of a Royal Yacht Squadron boat. The boat must be owned or sailed by a member of the Royal Yacht Squadron.

27.4 Open Trophies:

Royal Thames Spirit Cup: First Royal Thames Yacht Club boat home. The boat must be owned or sailed by a member of the Royal Thames Yacht Club.

Swinburne Cup: The first boat home owned or skippered by an Irish national.

27.5 Prizes under Notice of Race 16.1 Prizes, Classes will be sub-divided for prizes as follows:

IRC 1 A 1.150 and above IRC 1 B 1.149 and below

IRC 2 A 1.070 and above IRC 2 B 1.069 and below

IRC 3 A 1.030 and above IRC 3 B 1.029 and below

IRC 4 A 0.985 and above IRC 4 B 0.984 and below

27.6 AC1 and AC2 class boats will not be eligible for class prizes but are eligible for overall trophies.

28 PRIZEGIVING

28.1 The Rolex Fastnet Race Prizegiving will take place in the Rolex Fastnet Race Village, Plage Verte, Cherbourg on Friday 1st August from 18.00 hrs. local time (CEST). Further information about the prizegiving and entry requirements (if necessary) will be communicated to the fleet prior to Friday 1st August.

28.2 RORC Medallions will be presented on Saturday 20 September at 18.30 hrs. at the RORC Cowes Clubhouse, The Parade, Cowes, PO31 7QU. All skippers and crews are most welcome.

29 RISK STATEMENT

29.1 Rule 3 of the Racing Rules of Sailing states: “The responsibility for a boat’s decision to participate in a race or to continue racing is hers alone.”

29.2 Sailing is by its nature an unpredictable sport and therefore inherently involves an element of risk. By taking part in the event, each competitor agrees and acknowledges that:

- a) they are aware of the inherent element of risk involved in the sport and accept responsibility for the exposure of themselves, their crew and their boat to such inherent risk whilst taking part in the event;
- b) they are responsible for the safety of themselves, their crew, their boat and their other property whether afloat or ashore;
- c) they accept responsibility for any injury, damage or loss to the extent caused by their own actions or omission;
- d) their boat is in good order, equipped to sail in the event and they are fit to participate;
- e) the provision of a race management team and other officials and volunteers by the event organiser does not relieve them of their own responsibilities;
- f) they are responsible for ensuring that their boat is equipped and seaworthy so as to face extremes of weather; that there is a crew sufficient in number, experience and fitness to withstand such weather; and that the safety equipment is properly maintained, stowed, in date and familiar to the crew.

30 INSURANCE

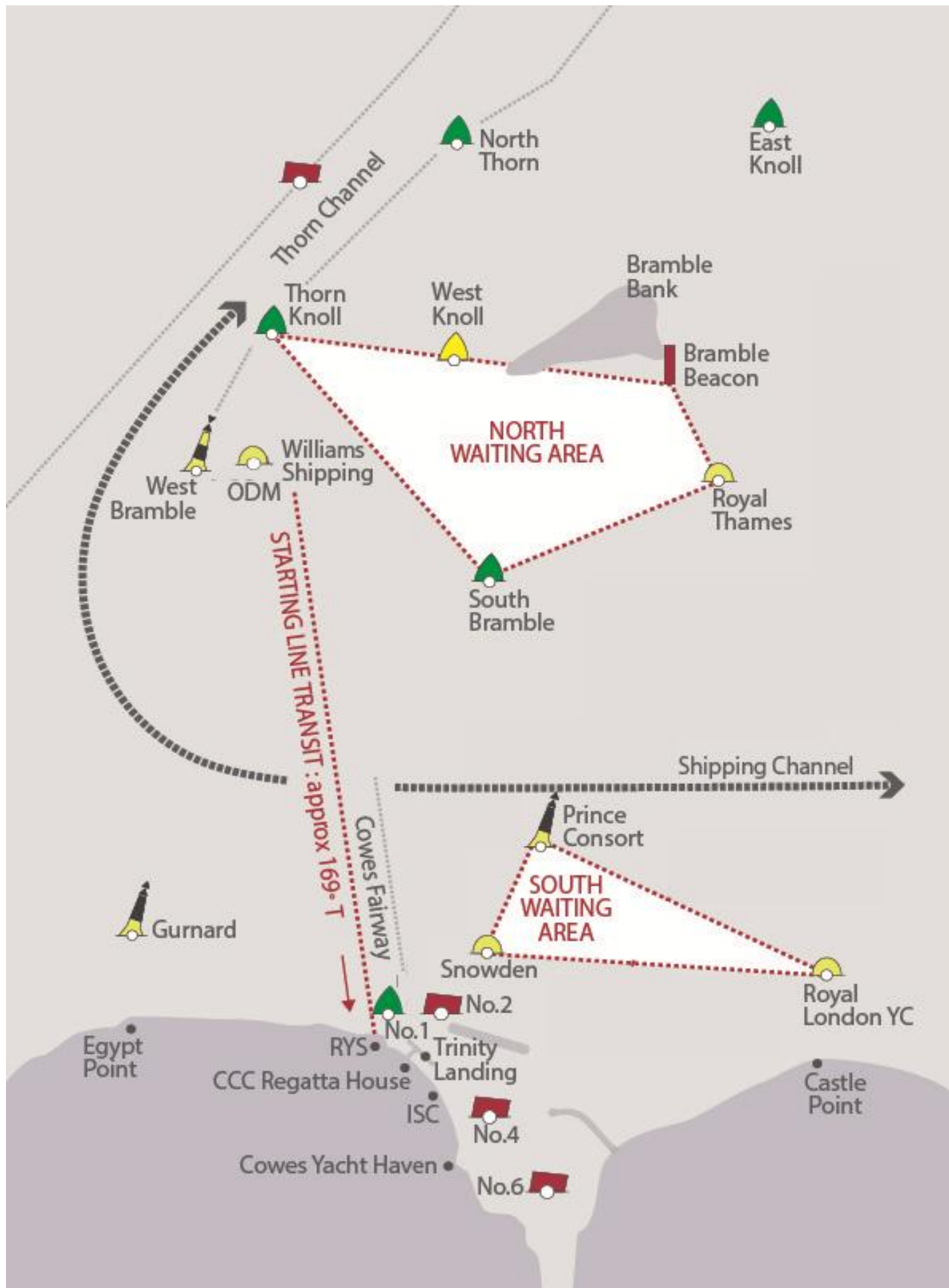
30.1 Each boat shall ensure that their boat is adequately insured against all third-party claims.

APPENDIX A

- A1 The area of Cowes Waterfront Obstruction is a line; the coordinates of the connecting points are given.
A2 The area of all other obstructions is a box; the coordinates of the corners are given.
A3 The boundaries are the rhumb lines between the corners.
A4 The obstructions apply to all classes with no exceptions, when racing.
A5 Obstructions may not reflect the charted extent of Traffic Separation Schemes. RRS Appendix TS still applies, especially with regards to manoeuvring in the vicinity of any TSS. However, the coordinates given below mark an absolute obstruction in addition to RRS Appendix TS and will be policed.

Obstruction	Position: Latitude(N) Longitude(W) – WGS84	
Cowes Waterfront	A – 50° 46.100'N 001° 18.870'W M Row Mooring Buoys (west)	B – 50° 46.131'N 001° 18.147'W M Row Mooring Buoys (east)
	C – 50° 46'.20N 001° 17'.75W Snowden Buoy (39)	D – 50° 46'.15N 001° 17'.20W Cowes Corinthian (34)
	E – 50° 46'.09N 001° 16'.89W Shrape Beacon	
Casquets *	A – 50° 03'.50N 002° 57'.40W	B – 50° 08'.60N 002° 28'.30W
	C – 49° 51'.30N 002° 21'.10W	D – 49° 46'.30N 002° 50'.30W
Off Lands End *	A – 50° 20'.03N 006° 05'.06W	B – 50° 20'.03N 005° 49'.58W
	C – 50° 00'.99N 005° 49'.58W	D – 49° 53'.54N 006° 05'.06W
South of Scilly Isles *	A – 49° 46'.00N 006° 29'.50W	B – 49° 46'.00N 006° 16'.50W
	C – 49° 35'.50N 006° 16'.50W	D – 49° 35'.50N 006° 34'.15W
West of Scilly Isles *	A – 50° 04'.07N 006° 48'.53W	B – 50° 01'.18N 006° 32'.78W
	C – 49° 52'.33N 006° 36'.73W	D – 49° 52'.33N 006° 53'.78W
Fastnet Rock *	A – 51° 21'.10N 009° 36'.60W	B – 51° 22'.90N 009° 27'.30W
	C – 51° 17'.10N 009° 24'.60W	D – 51° 15'.45N 009° 33'.90W

* See A5 above for these obstructions.



APPENDIX B

B1 This course is for **all Classes**

B2 Course

Order	Mark		Position (WGS84)*	
			Latitude	Longitude
1	Runnel Stone Lt Buoy	Starboard	50° 01'.18N	005° 40'.36W
2	Fastnet TSS	Port	See Appendix A	
3	Fastnet Rock	Port	51° 23'.35N	009° 36'.19W
4	Fastnet TSS	Port	See Appendix A	
5	Isles of Scilly – including Bishops Rock and all outlying rocks and islets within 8nm of Peninnis Head Lt, St Mary's	Port	49° 54'.28N	006° 18'.21W
Finish	Cherbourg - See SI 21			

Distance: approximately 695nm

* The position of marks is approximate.

NOTICES TO COMPETITORS (NOT PART OF THE RULES)

1 IMMIGRATION & CUSTOMS FORMALITIES

A detailed list of Immigration and Customs Formalities is available on the Official Notice Board [Rolex Fastnet Race](#)

Please ensure that the Person in Charge and all Crew are aware of their legal obligations upon entering and leaving the United Kingdom or Schengen area to avoid potentially severe penalties.

2 CLARIFICATION ON ISLES OF SCILLY OUTLYING ROCKS

With regards to the Course, "Isles of Scilly – including Bishops Rock and all outlying rocks and islets within 8nm of Peninnis Head Lt, St Mary's":

For the purposes of a clarification, the Isle of Scilly description in Appendix B is intended to indicate that no boat shall pass any rock or islets within 8nm of Peninnis Head to starboard; any rock or islet within that circle shall be left to port.

This does NOT mean that a boat must stay 8nm from Peninnis Head. Rocks and islets are clearly marked on up-to-date charts.

3 OTHER RESOURCES

Consult the Race Website on <https://rolexfastnetrace.com/en/competitors> to access a detailed guide for entrants, find facts and stats, find the tracking player and links to obtain tracking data for Expedition, Adrena etc or low-bandwidth leaderboards, partner offers and the bag drop service.